

SIL Greek (polytonic precomposed) Unicode keyboard

Installation Guide

Installation and Setup in Microsoft ® Windows ®

Follow the instructions below, according to your operating system.

Keyboard Installation

Keyman 6 or later is needed for using the keyboard. Keyman's latest version is available from www.tavultesoft.com. If you will be writing or modifying keyboards, you will need the Developer version. Otherwise, get the regular version.

If you already have an up-to-date Keyman application installed, skip where it indicates to uninstall or install Keyman

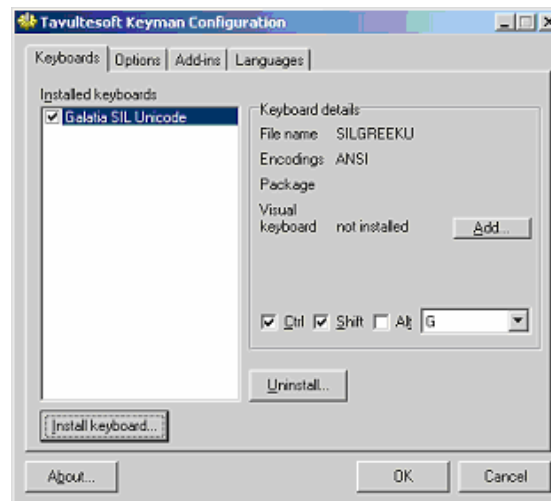
Keyman Install

1. Uninstall any previous versions of Keyman.
2. Install Keyman, **following the installation instructions provided with Keyman.**
3. If you haven't run Keyman for the first time yet, go to **Start / Programs / Tavultesoft Keyman** (or whatever location you chose during install.)
4. This will briefly show an 'About' screen and place the Keyman icon in your system tray (bottom left of screen).
5. Register your copy by right-clicking this icon (a rotated key with a 'k'), then click **About / Register.**
6. Right-click the Keyman icon, click **Keyman Configuration....** Click the **Options** tab and checkmark "Start Keyman with Windows." Click **OK.**

Keyboard Install

The new Unicode keyboard is *GrkPolyComp.kmx*.

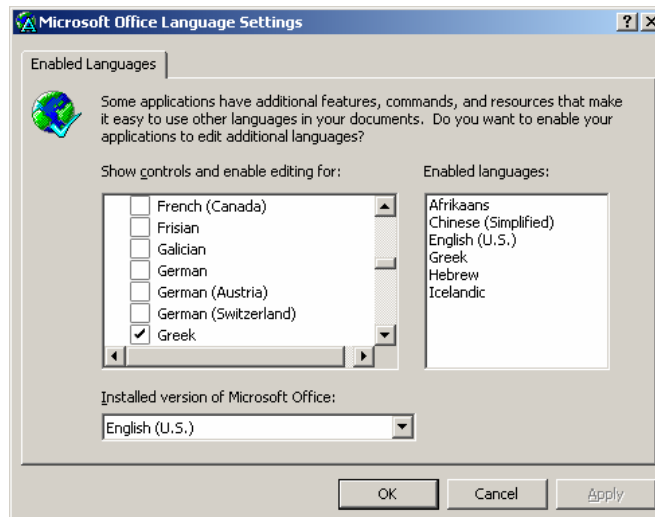
1. Install this keyboard by right-clicking the Keyman icon on your system tray.
2. Click **Keyman Configuration...**
3. Click the **Install Keyboard** button.
4. Browse to the location of the file *GrkPolyComp.kmx*. Choose it from the **Keyboards6** folder.
5. Click *Galatia SIL - Unicode* to select it. Then click **Open**, choose a hotkey (one is already selected for you but you may choose another one or choose none), then **Install**. For Keyman 6, choose the hotkey *after* selecting **Install**. Then click **OK**. You should get a message saying the keyboard was installed successfully.



6. Click **OK** and **OK**.

Office 2000 Language Settings

To work with a keyboard in Windows, you should associate it with a language in **Start / Programs / Microsoft Office Tools / Microsoft Office Language Settings**. If not already installed, select Greek.

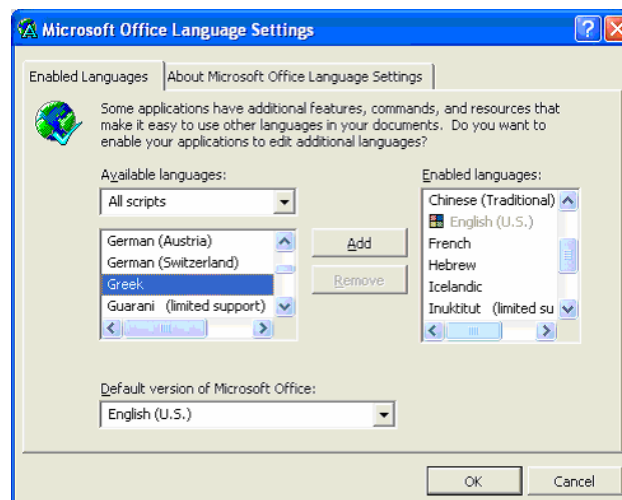


You can delay restarting until finishing these installation instructions.

Office XP Language Settings

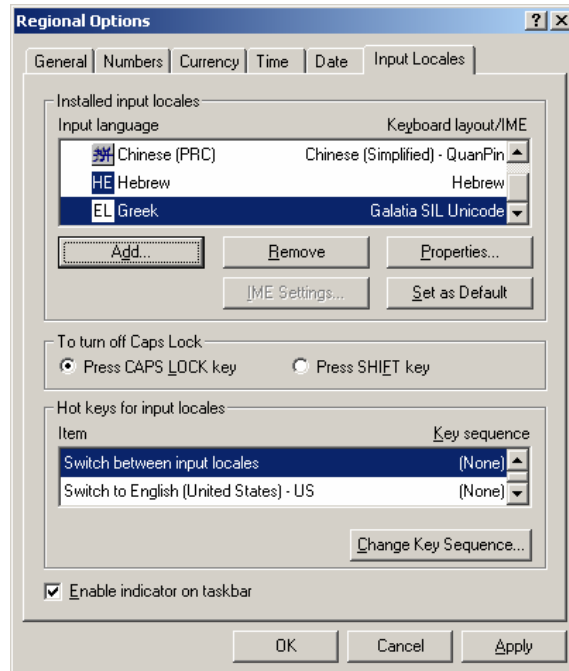
To work with a keyboard in Windows, you should associate it with a language in **Start / Programs / Microsoft Office Tools / Microsoft Office XP Language Settings**. If not already installed, select Greek.

Click on **Add** and then **OK**. Follow the directions on the screen. You can delay restarting until finishing these installation instructions.

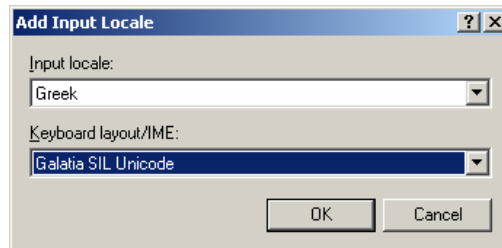


Input Locales (for Windows 2000)

1. Go to **Start / Settings / Control Panel / Regional Options**.
2. Click the Input Locales tab.
3. Either **Add** or highlight the Greek one and change its **Properties**. You can have more than one Greek locale.



4. Set the keyboard to **Galatia SIL Unicode**.



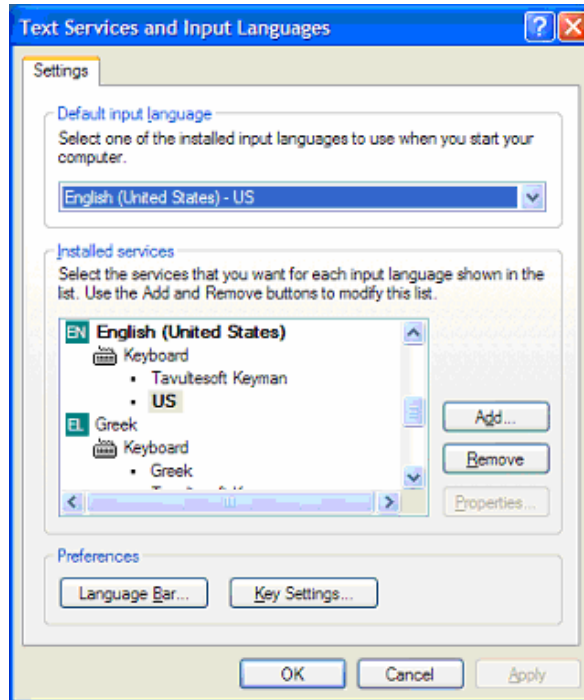
5. Click **OK**, **Apply**, **OK**. Once you have the Keyman keyboard associated with Greek, you should switch it on and off *only* using the input locale icon. You shouldn't use the Keyman icon. Close the Control Panel window.
6. Restart.

Using the Keyboard in Windows 2000

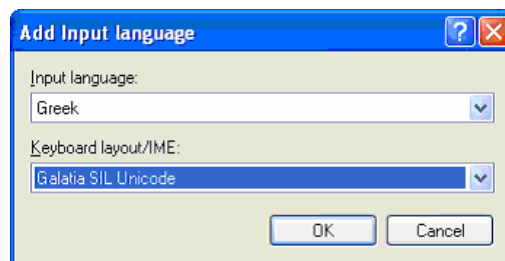
To use the keyboard, go to your application, set the font to **Galatia SIL**. Click the language icon on your system tray ('EN' for English) and select **EL Greek - Galatia SIL Unicode** as the keyboard. Click the left-pointing paragraph icon (Right-to-Left) found on the Formatting toolbar to place the cursor on the right margin. Begin typing. The keyboard layout is described in the documentation folder.

Input Locales (Text Services for Windows XP)

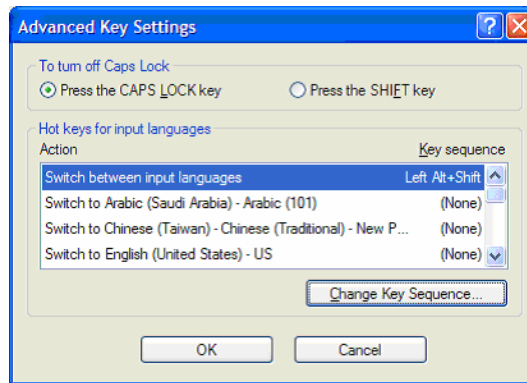
1. Go to **Start / Settings / Control Panel / Regional and Language Options**.
2. Select the **Languages** tab, then the **Details...** button. If not already installed, you will need to add Greek. Click **Add**.



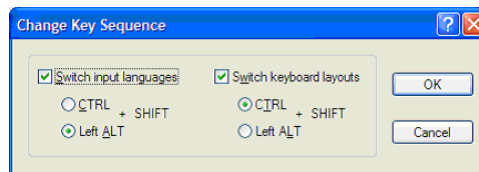
3. Set the Input Language to **Greek** and the keyboard to **Galatia SIL Unicode**.



4. Click **OK**. Once you have the Keyman keyboard associated with Greek, you should switch it on and off *only* using the Language Bar icon. You shouldn't use the Keyman icon.
5. From the Text Services window, you will also need to turn off keyboard switching. Click **Key Settings**.



6. Click **Change Key Sequence** while “Switch between input languages” is highlighted. Uncheck both boxes or set so that only one is on and uses CTRL, not Left ALT. Click **OK, OK, OK** and **OK**. You will have to reset this often, since Windows will go back to the default of using Left ALT for every keyboard you install. The default setting will interfere with any keyboard that defines Alt-Shift in combination with any key.



7. Close the Control Panel window.
8. Restart.

Note: You may install more than one keyboard for a given language. For instance, you can assign more than one keyboard to Greek, or add a keyboard to a language which also has a system keyboard. If a language has multiple keyboards assigned, you will see a small ‘keyboard’ icon appear in the system tray when you select that language. Click it and select the keyboard you wish to use.

Using the Keyboard in Windows XP

To use the keyboard, go to your application, set the font to **Galatia SIL**. Click the language icon on your system tray or Language Bar ('EN' for English) and select **EL Greek** as the language. Then click the small ‘keyboard’ icon and select the keyboard “Galatia SIL Unicode.” Begin typing. The keyboard layout is described in the documentation folder.

Uninstalling a Keyboard in Windows 2000/XP

The Input Locale should be deleted before uninstalling the keyboard from Keyman.

1. Right-click the language icon (**EN** for English) on your system tray.
2. Click **Properties** (**Settings** in Windows XP).
3. Scroll down to the **Greek** input locale and the **Galatia SIL - Unicode** keyboard. Click once to highlight.
4. Click **Remove**. Click **Apply** and **OK**.
5. Close the Input Locales window.
6. Right-click the Keyman icon in your system tray.
7. Click **Keyman Configuration....**
8. Click **Galatia SIL - Unicode** once to highlight.
9. Click **Uninstall...** Click **OK**, **OK**, and **OK**.

The keyboard and its input locale are now deleted. You may need to repeat deleting the Greek input locale to completely remove it.